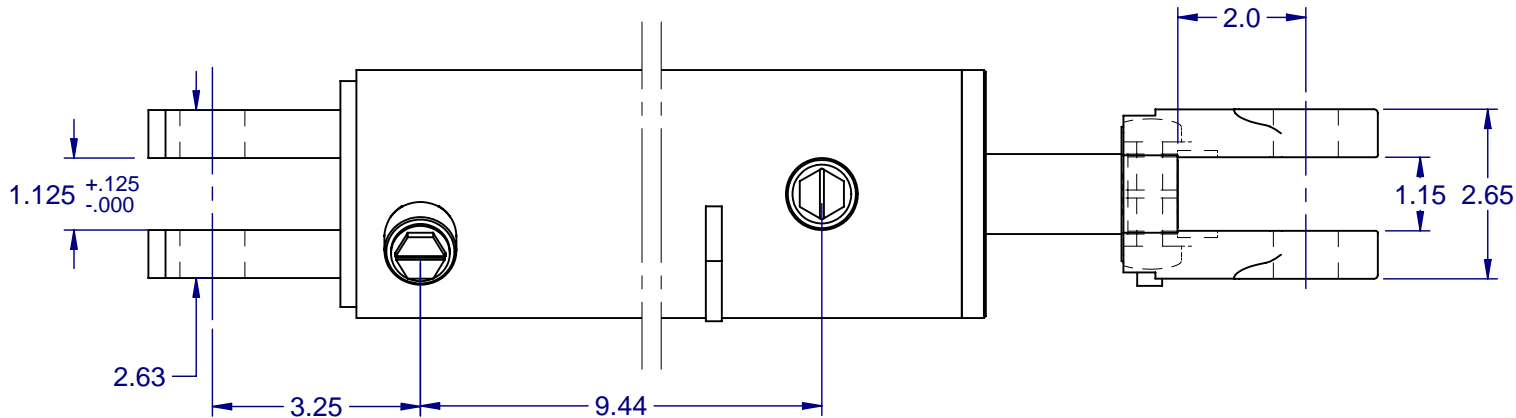
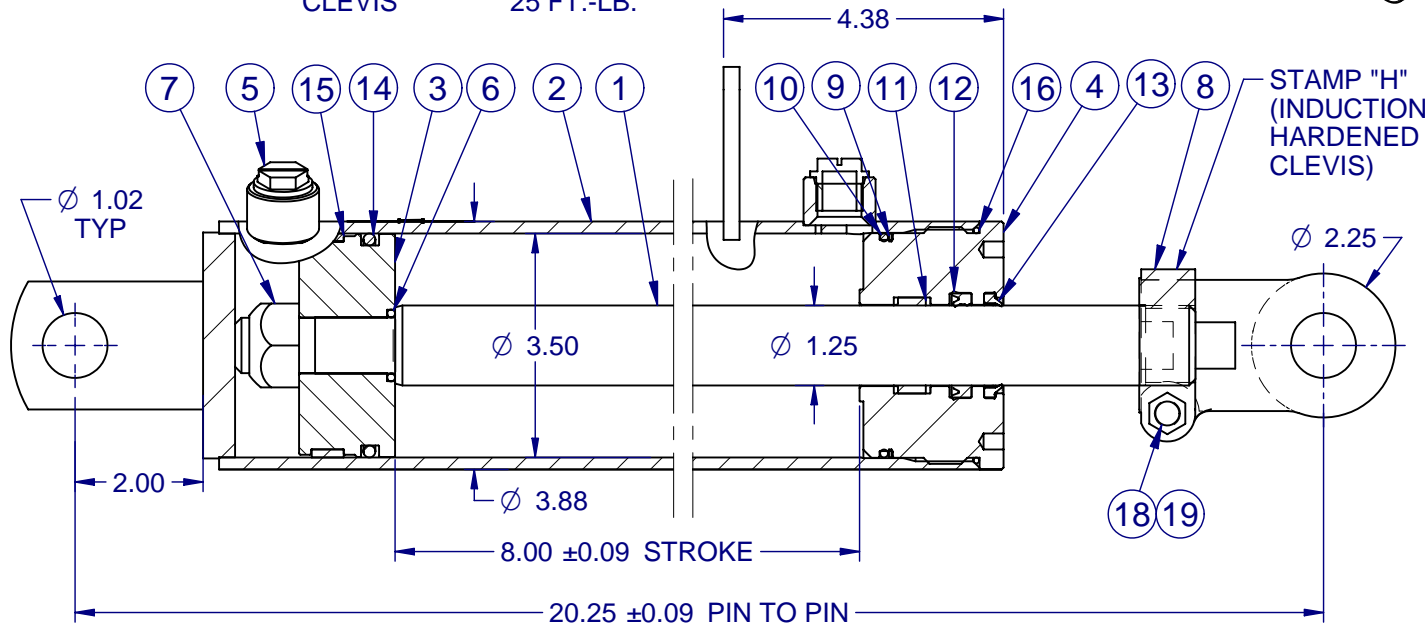
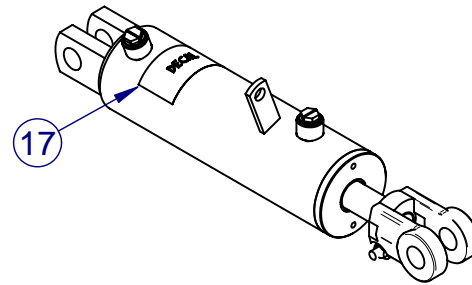


DO NOT SCALE DRAWING

- NOTE: 1) MATERIAL - 9139510 - PAINT RED BOURGAULT
 2) MATERIAL - 9346362 - SEAL KIT 3.50 X 1.25 X .875
 3) SETTLE BACK IS +0.31 TO -0.03
 4) AT 500 PSI PRESSURE DROP
 REPHASE FLOW IS 1.50 TO 3.00 GAL. U.S./MIN.
 5) WORKING PRESSURE 3000 PSI
 6) TORQUE SPEC: HEAD 200 FT.-LB.
 PISTON NUT 180 FT.-LB.
 CLEVIS 25 FT.-LB.



NO	REVISION	BY	APP	DATE

19	9857558	NUT LOCK UNITORQ .375-16 UNC	1
18	9803842	BOLT HEX .375-16 UNC X 2.25 LG	1
17	9160813	DECAL PAL SERIAL NUMBER	1
16	9404633	O RING BN 3.688 X 3.500	1
15	9227182	W-RING 3.50 OD X .125 X .50	1
14	9408196	O RING P 3.500 X 3.125	1
13	9440108	WIPER SNAP 1.25 X 1.63 X .187	1
12	9419029	U CUP ROD 1.25 X 1.63 X .3125	1
11	9409699	W-RING 1.50 OD X .125 X .50	1
10	9402363	O RING BN 3.500 X 3.250	1
9	9424821	BU WASHER 3.500 X 3.250	1
8	10002146	CLEVIS ROD 1.25 UNF 1.00 DIA IH	1
7	9857848	NUT LOCK UNITORQ .875-14 UNF	1
6	9402124	O RING BN 1.125 X .875	1
5	9342700	PORT PLUG THD ORB #8	2
4	9220427	HEAD THD 3.50 X 1.25	1
3	9207010	PISTON 3.50 X .875 W-RING	1
2	10002154	TUBE 3508 BOURGAULT	1
1	10003440	SHAFT 3508 BOURGAULT NITRO	1

No.	Item No.	Description	Qty
		UNLESS OTHERWISE SPECIFIED TOLERANCES FOR NONLIMITED DIMENSIONS	
		.X ± .060	
		.XX ± .030	
		.XXX ± .010	
		ANGULAR ± 1°	

SURFACE FINISH:		125/
DR'N	TH	DATE 02/21/07
CHK'D	DM	DATE 02/21/07
APP'D	DM	DATE 02/21/07



481 PANET ROAD
 WINNIPEG, CANADA
 R3C 2W7

PH. (204) 667-4630
 FAX (204) 668-4530

THIS DRAWING IS THE PROPERTY OF PRINCESS AUTO LTD. AND IS BEING SUPPLIED FOR QUOTATION AND/OR FABRICATION PURPOSES ONLY. AS REQUIRED OR REQUESTED BY PRINCESS AUTO LTD. THIS DRAWING AND INFORMATION CONTAINED ON THE SAME MUST NOT BE USED FOR ANY OTHER PURPOSE THAN THAT INTENDED - NOR IN ANY OTHER MANNER THAT MAY PROVE DETRIMENTAL TO THE INTERESTS OF PRINCESS AUTO LTD.

END PRODUCT DESCRIPTION		
CYL 3508 BOURGAULT (3301-70)		
SCALE	ITEM NO.	REV
1 : 3	10002152P	0
SHEET CONT. ON		
1 of 1		