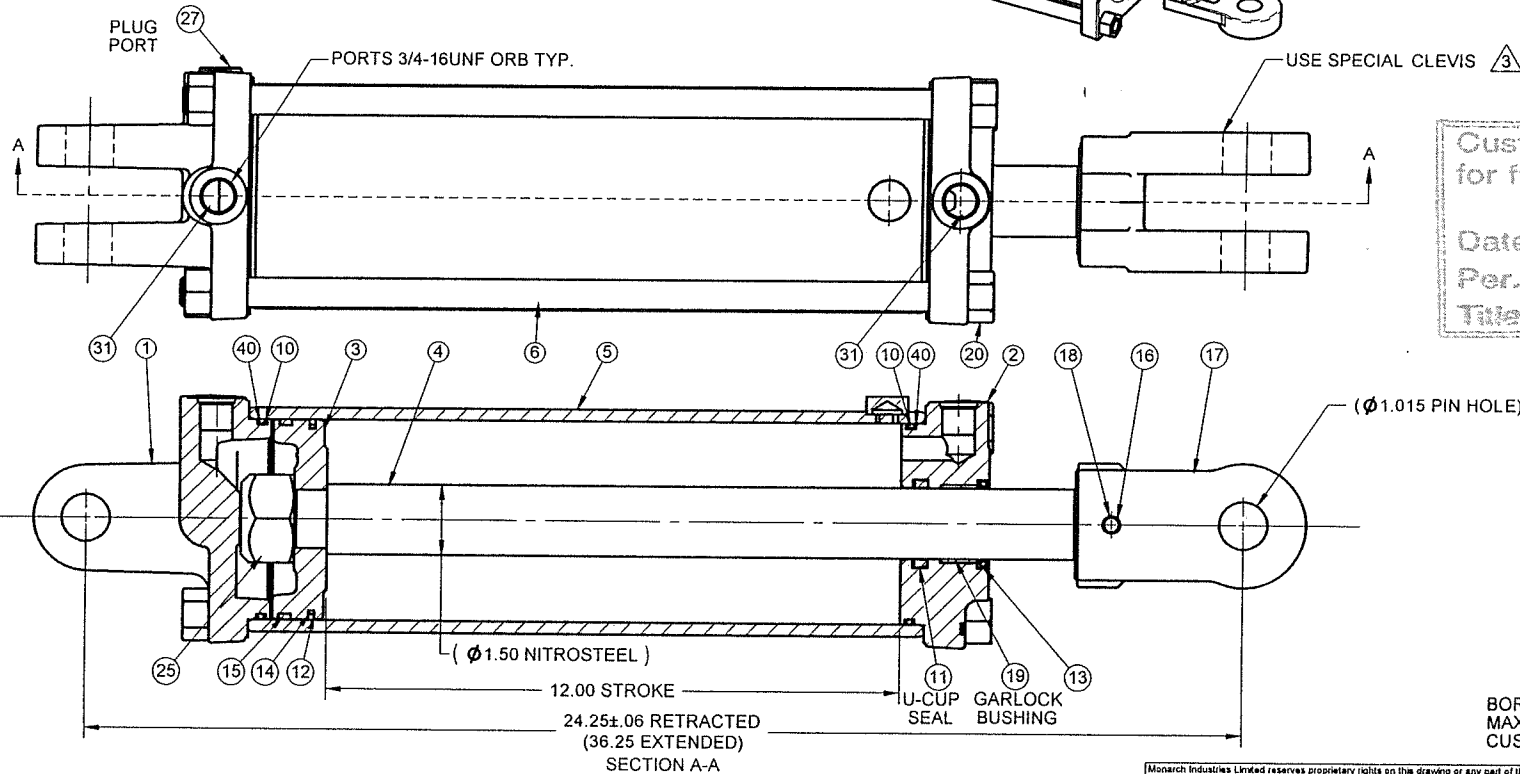
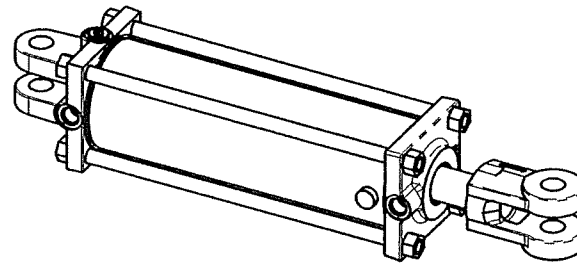


NOTES: (ASSEMBLY)

1. PORTS ARE 90° TO PIN HOLES
2. RETRACTED LENGTH _____
3. EXTENDED LENGTH _____
4. ROD DIAMETER _____
5. PORTS _____
6. REPHASE ON EXTENSION
7. ROD MATERIAL NITROSTEEL (75,000 PSI)
8. USE ROD CLEVIS #493837
9. 100% AIR TEST
10. 100% OIL TEST

REVISIONS					
NO	ECR #	DESCRIPTION	DATE	RESEED	APPROVED
—	98-524	DRAWING RELEASE	24DEC98	CDR	
3	05-0392	REDRAWN IN SOLIDWORKS, UPDATE ROD CLEVIS	12APR05	JR	
4	05-0588	REMOVE LION LABEL	20JUN05	JR	



BORE 4.25 X 12.00 STROKE
 MAX. WORKING PRESSURE 3000 PSI
 CUSTOMER PART #: 3301-47

NOTES: (PAINTING/PACKAGING) Δ 4

1. PAINT RED PRIMER
2. PAINT MONARCH RED
3. AFFIX ID LABEL
4. PACK CYLINDER IN PLASTIC BAG

Monarch Industries Limited reserves proprietary rights on the drawing or any part of the information contained thereon. This drawings shall be considered confidential material and is not to be used for competitive bidding nor for use in any procurements other than from Monarch Industries Limited

MATERIAL		<p>MONARCH INDUSTRIES LTD WINNEPEG CANADA</p>
MAT. #		
MACHINING TOLERANCES UNLESS OTHERWISE SPECIFIED XX ±.100 FRACTIONS ± 1/32 XXX ±.020 ANGULAR ±1° XXXX ±.005 RADIUS 1/8 Ø .005 T4 ◻ .01 / .001/inch ◻ .002/inch / .001/inch ◻ .001/inch / .001/inch ◻ .001/inch Surface Finish 125 ✓		DRAWN J. RATHBONE DESIGNED J. RATHBONE APPROVED DATE 12APR05 SCALE NTS
		CODE # 643848 42TP12-150