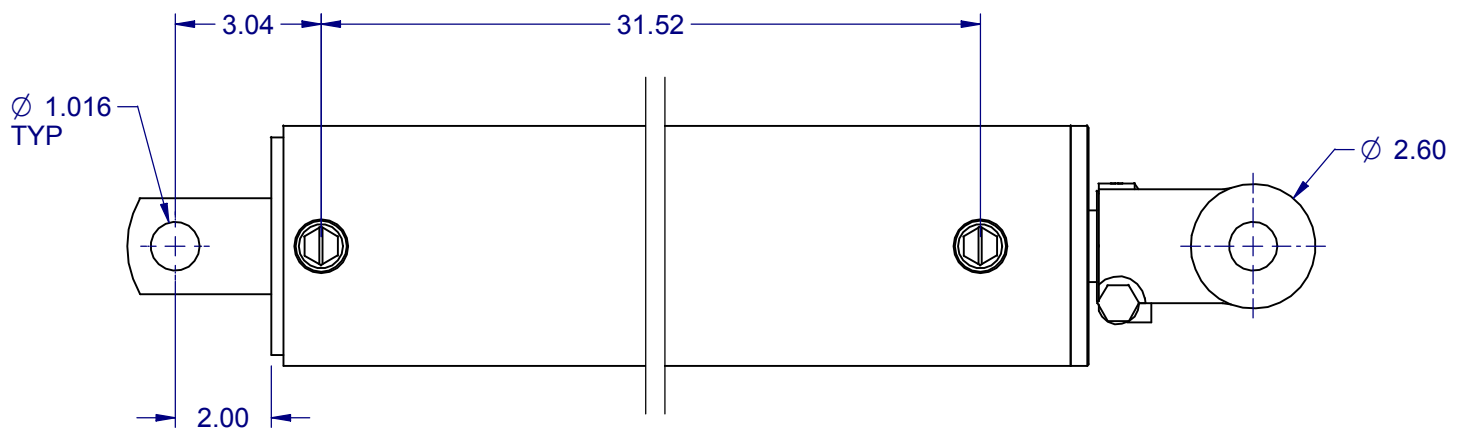
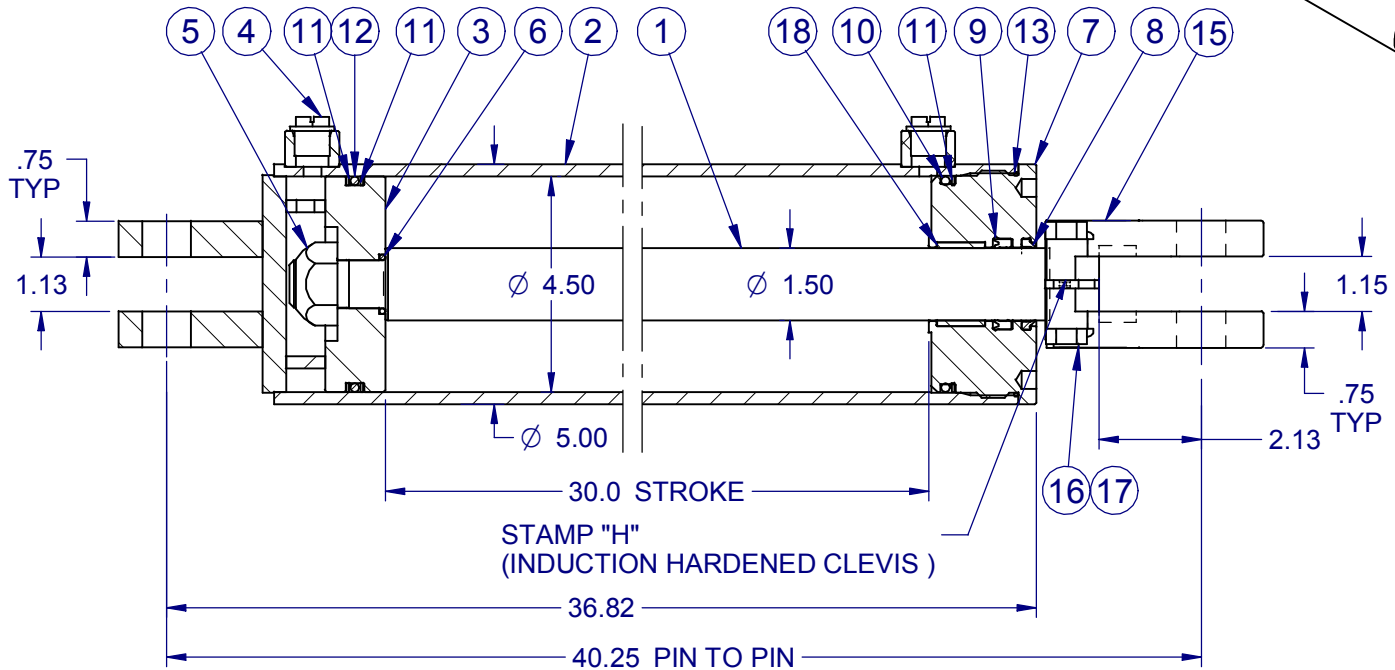
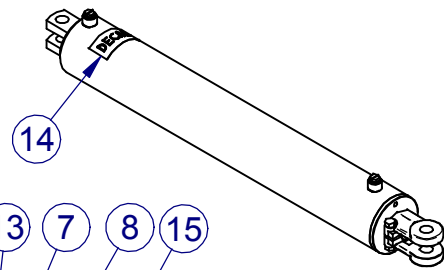


DO NOT SCALE DRAWING

- NOTE: 1) WORKING PRESSURE: 1735 PSI FULL EXTENTION
2088 PSI RETRACTION
2) MATERIAL - 9348426 - SEAL KIT 4.50 X 1.50 X 1.00
3) MATERIAL - 9139510 - PAINT RED BOURGAULT



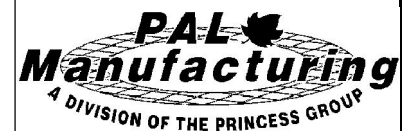
NO	REVISION	BY	APP	DATE
10	REDRAWN			
	9209867 WAS 9731019			
	ADDED 9400003	TH	DM	10/27/08

18	9400003	W-RING 1.75 OD X .125 X 1.0	1
17	9851387	NUT JAM LOCK .500-13 UNC	1
16	9804592	BOLT HEX .500-13 UNC X 2.25 LG GR 5 PTD	1
15	9702705	CLEVIS ROD 1.50 X 1.00 DIA	1
14	9160813	DECAL PAL SERIAL NUMBER	1
13	9404468	O RING BN 4.688 X 4.500	1
12	9409525	O RING P 4.500 X 4.125	1
11	9425745	BU WASHER 4.500 X 4.125 PI	3
10	9403460	O RING BN 4.500 X 4.125	1
9	9419102	U CUP ROD 1.50 X 1.88 X .375	1
8	9440140	WIPER SNAP 1.50 X 1.88 X .187	1
7	9209867	HEAD THD 4.50 X 1.50 W-RING	1
6	9402140	O RING BN 1.250 X 1.000	1
5	9857855	NUT LOCK UNITORQ 1.00-14 UNS	1
4	9342700	PORT PLUG THD ORB #8	2
3	9709106	PISTON 4.50 X 1.00 C'BORE	1
2	9387804	TUBE 4530 BOURGAULT	1
1	9397621	SHAFT 4530 BOURGAULT	1

UNLESS OTHERWISE SPECIFIED TOLERANCES FOR NONLIMITED DIMENSIONS

.X ± .060
.XX ± .030
.XXX ± .010
ANGULAR ± 1°

SURFACE FINISH:		125/
DR'N	TH	DATE 10/27/08
CHK'D	DM	DATE 10/27/08
APP'D	DM	DATE 10/27/08



481 PANET ROAD WINNIPEG, CANADA R3C 2W7
PH. (204) 667-4630 FAX (204) 668-4530

THIS DRAWING IS THE PROPERTY OF PRINCESS AUTO LTD. AND IS BEING SUPPLIED FOR QUOTATION AND/OR FABRICATION PURPOSES ONLY - AS REQUIRED OR REQUESTED BY PRINCESS AUTO LTD. THIS DRAWING AND INFORMATION CONTAINED ON THE SAME MUST NOT BE USED FOR ANY OTHER PURPOSE THAN THAT INTENDED - NOR IN ANY OTHER MANNER THAT MAY PROVE DETRIMENTAL TO THE INTERESTS OF PRINCESS AUTO LTD.

END PRODUCT DESCRIPTION		
CYL 4530 BOURGAULT		
BOURGAULT # (3300-62)		
SCALE	ITEM NO.	REV
1 : 4	9997727P	10
SHEET CONT. ON		
1 of 1		